

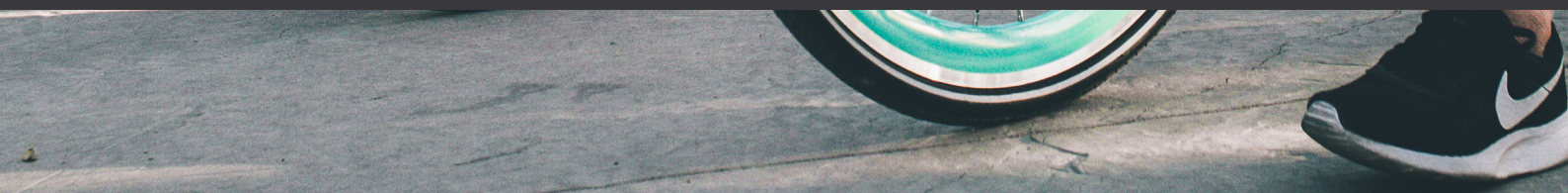


USER GUIDE



CONTENTS

Part identification	p.5
Tools for the assembly	p.7
Assembling your bike	p.9
Locking your bike	p.10
Unlocking your bike	p.14

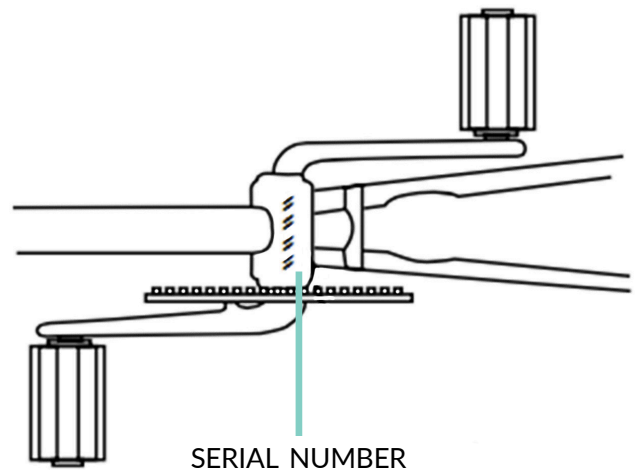


WELCOME TO THE YERKA FAMILY!

BEFORE STARTING PLEASE REGISTER YOUR BIKE

Each Yerka has a serial number stamped into the bottom of the frame (see illustration).

You must register this number in our website in order to validate your warranty.
Scan the following QR code or enter the next url link:



CUSTOMER SERVICE

INFO@YERKAPROJECT.COM
WWW.YERKABIKES.COM

YERKABIKES.COM/REGISTER

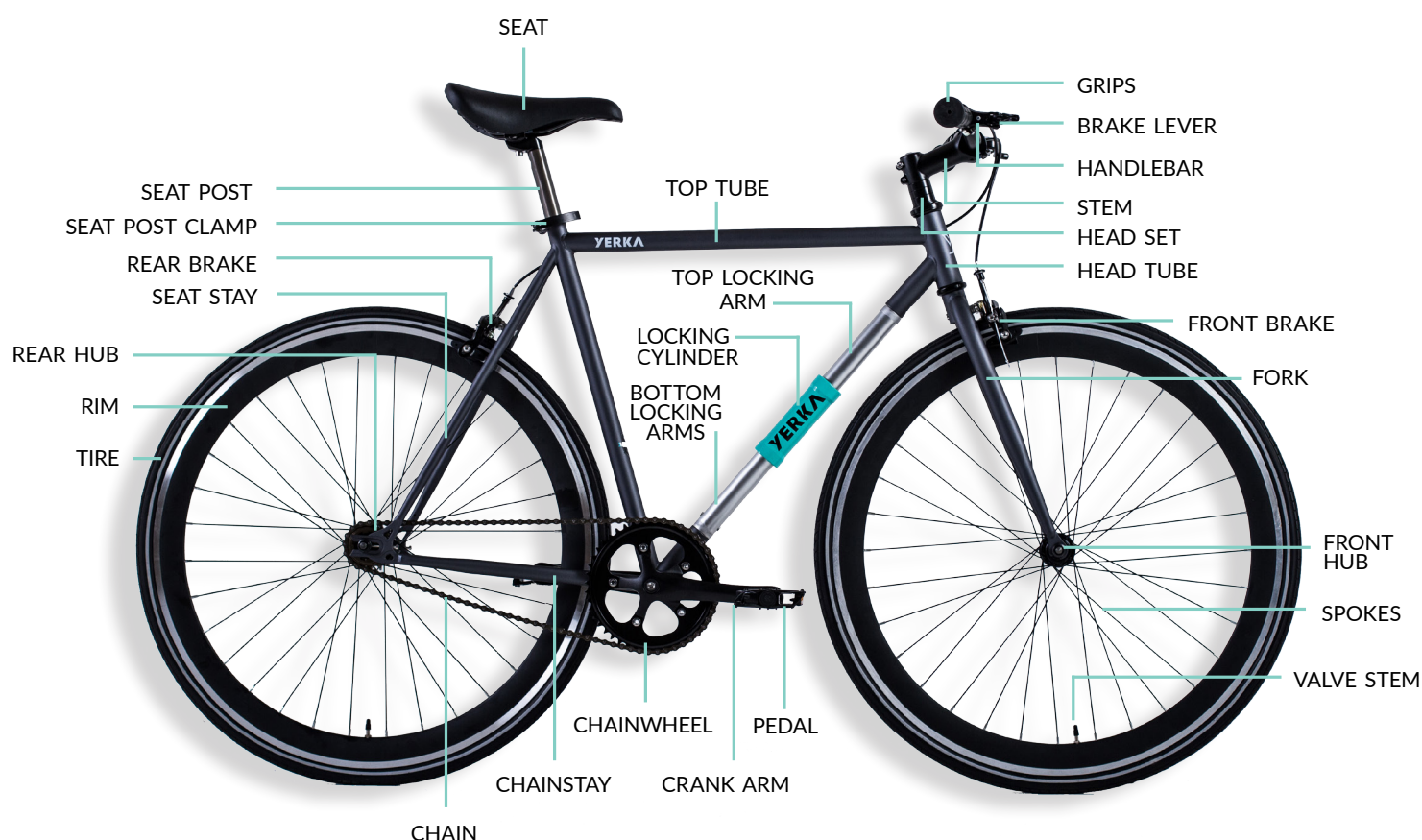


THIS IS TRUE URBAN FREEDOM

We believe that the city is the cradle of creation and we seek inspiration in every corner of it. Yerka was born with the purpose of delivering all cyclists the most comfortable and safest solutions for their daily lives. To achieve this we develop products with design and innovative technology always pursuing simplicity. Being free, unattached and independent in every way allows us to create our journey every day. Collaboration has been one of our key since the beginning, because thanks to the help of hundreds of supporters we pushed our initiative. We invite you to be part of this movement and see the city with new eyes.

YERKA BIKE

PART IDENTIFICATION



BEFORE RIDING

Your Yerka bicycle was assembled and tuned in the factory and then partially disassembled for shipping. The following instructions will enable you to assemble your Yerka and use the locking system. Please familiarize with the different parts of your bicycle before the assembly tutorial.

If you have any doubts about your ability to properly assemble your bicycle, you must have it assembled by a professional bicycle mechanic.

ASSEMBLING YOUR YERKA BIKE





TO AVOID INJURY, YOUR YERKA MUST BE PROPERLY ASSEMBLED BEFORE USE. WE STRONGLY RECOMMEND THAT YOU REVIEW THE COMPLETE ASSEMBLY GUIDE AND PERFORM CHECKS SPECIFIED IN THE OWNER'S MANUAL BEFORE RIDING.

YOU WILL NEED THE FOLLOWING TOOLS



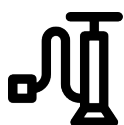
- 4 and 5mm Allen wrench (**included**)



- 15mm wrench (**included**)



- Presta Valve adapter (**included**)



- Air pump to inflate tires



- Scissors



**You
Tube**

HOW TO ASSEMBLE YOUR YERKA BIKE

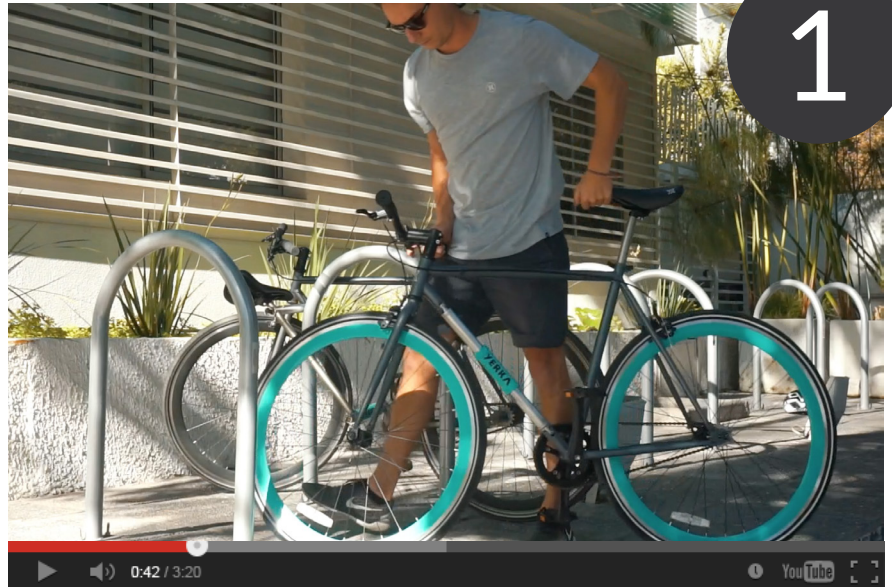
Watch the step-by-step video tutorial on our YouTube channel. Scan this QR code or enter the following url address to enter:



YERKABIKES.COM/ASSEMBLY

LOCKING THE YERKA BIKE

Find a structure with a diameter of up to 17 cm* compatible with the Yerka Locking Mechanism.



Position yourself to the right side of the bike.



Watch more video tutorials in our Youtube channel:

YERKABIKE.COM/YOUTUBE





3



Unlock the locking cylinder by turning it in the opposite direction of the clock.

4



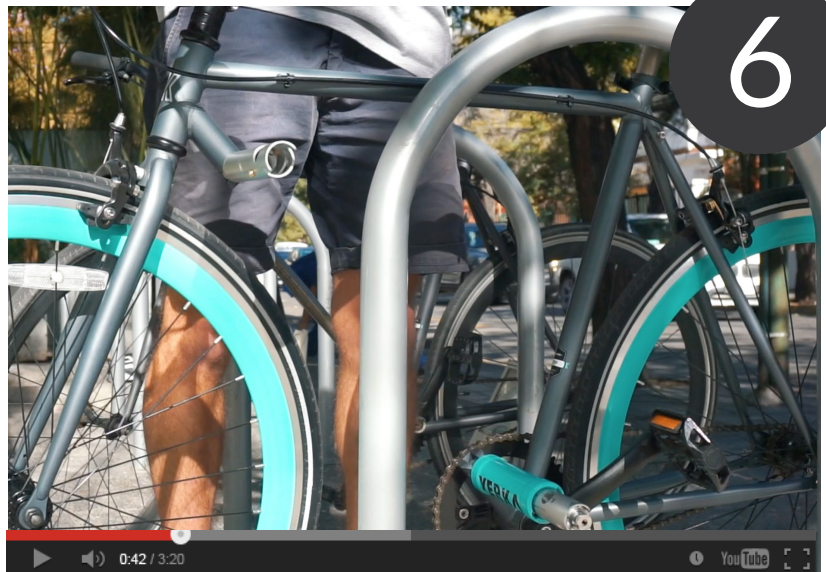
Then slide it down and place it over the bottom locking arm.

LOCKING THE YERKA BIKE CONT...

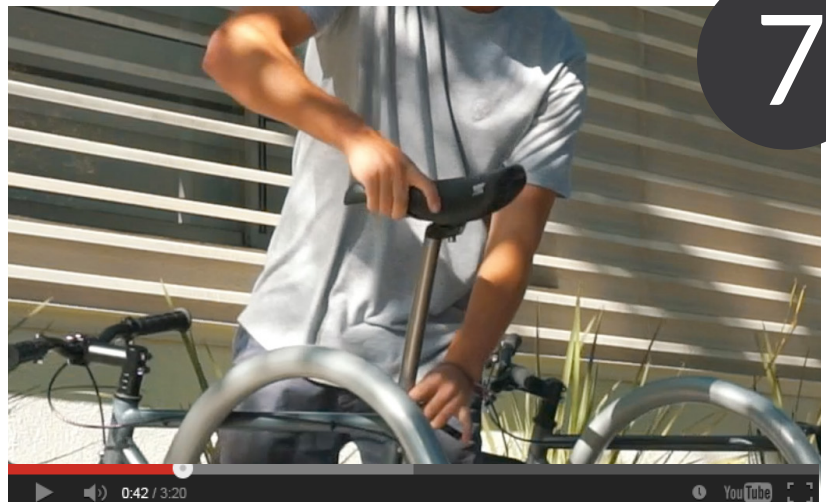
Open the top locking arm first in the forward direction, then the bottom one.



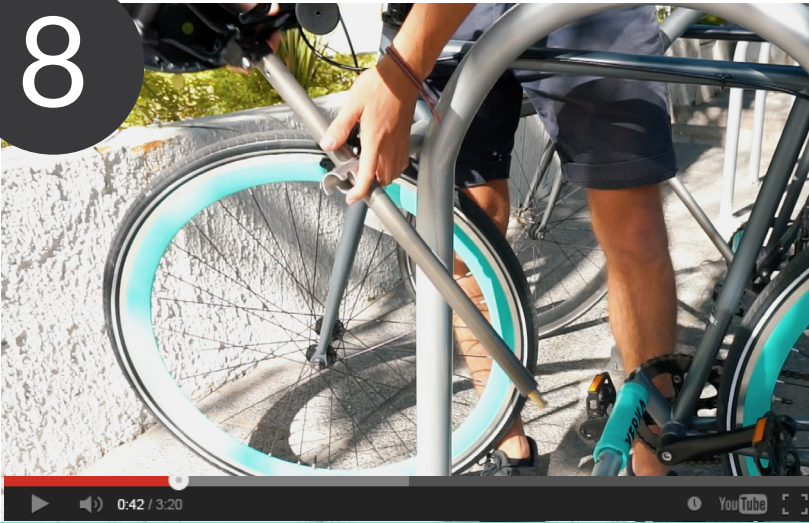
Place the bike against the structure, release the Seat Tube Clamp...



...and remove the Seat Tube



8



Cross the Seat Tube through the hole of the Top Locking



...and finish by fully inserting the Locking Head into the Lock.**

10



Close the Lock by pressing the button and check that it's fully closed.

UNLOCKING THE YERKA BIKE

1

Insert the key and open the Lock.

2

Remove the Seat Tube with the right hand and place it back into the frame. Close the Seat Tube Clamp. Check that the Seat Tube is fixed and motionless.

3

Take the key out of the Lock.

4

Close the Bottom Locking Arm first, then the Top one and finally re-attach them together.

5

Slide the Locking Cylinder up and turn it in the clock direction.

PRECAUTIONS

1. DON'T LEAVE THE KEYS IN THE LOCK. ALWAYS TAKE THEM WITH YOU.
2. DON'T LOCK YOUR BIKE TO TREES OR STRUCTURES WHERE IT'S NOT PERMITTED.
3. ON RAINY DAYS TRY TO AVOID LEAVING YOUR YERKA BIKE OUTSIDE OR COVER THE SEAT TUBE OPENING TO PREVENT WATER ENTERING THE FRAME (YOU CAN USE THE PLASTIC CAP INCLUDED IN THE PACKAGING)



**ALWAYS REMEMBER TO TURN THE LOCKING
CILINDER BACK TO ITS POSITION WHEN CLOSING
THE LOCKING SYSTEM. THE YERKA LOGO SHOULD
BE FACING TO THE SIDE, OTHERWISE IT MAY
COLAPSE CAUSING SERIOUS INJURY OR DEATH.**

THE LOCKING MECHANISM INSTRUCTION MANUAL FOR ASSEMBLE,
DISASSEMBLE AND TECHNICAL SERVICE CAN BE DOWNLOADED
FROM OUR WEBPAGE:

WWW.YERKABIKES.COM





SHARE US YOUR BEST



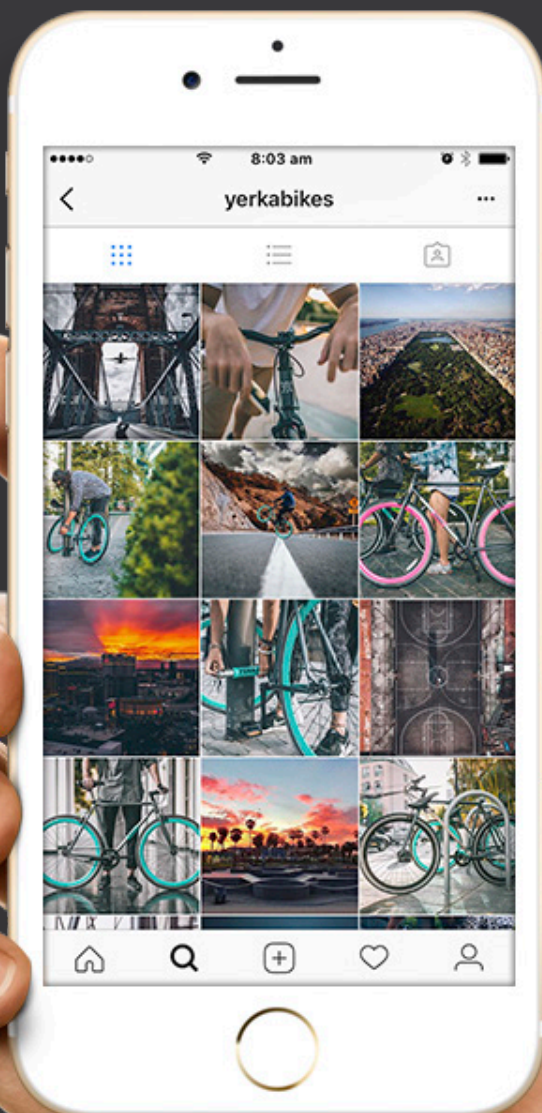
YERKA SHOT



Tag **#yerkabikes** on Facebook, Twitter or Instagram to be featured in our feed.



Use your phone camera flash and watch the reflective tires light up!



SAY HELLO!



[FACEBOOK.COM/YERKACL](https://www.facebook.com/YERKACL)



[TWITTER.COM/YERKAPROJECT](https://twitter.com/YERKAPROJECT)



[INSTAGRAM.COM/YERKABIKE](https://www.instagram.com/YERKABIKE)



INFO@YERKAPROJECT.COM

WWW.YERKABIKE.COM